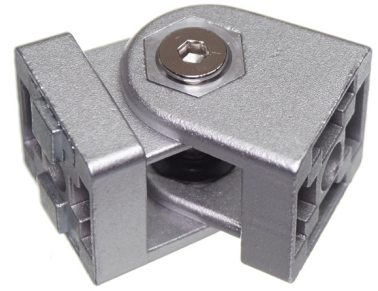


Serie 30 - Arm

Tiltable arm for series 30 profiles. Can be mounted on the side or in the end of the profiles.



Tiltable arm for series 30 profiles. The arms can be mounted on the side or at the end of the profiles. There are locking taps included, that fit in to the ends of the arms, so that they are locking in to the tracks of the profile, or in the ends.

The position of the arm can be locked by fastening the bolt with an unbrako key. If you want an arm that is easy to adjust, you can buy the model with locking handle.

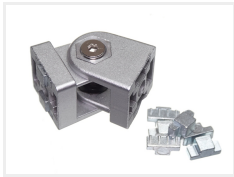
Thickness at mounting point: 7.5mm

matronics

Buy online at www.matronics.eu/A300409

Product overview

Complete arm



SKU A300410
Dimensions: 30 x 49 x 30mm

Complete arm with handle



SKU A300409
Dimensions: 49 x 30 x 30mm