

Linear actuator, 500N / 50kg

Compact and economic linear actuator for smaller projects, where it can be used for numerous purposes. Connects to 12V DC or 24V. DC



Compact and economic linear actuator for smaller projects, where it can be used for numerous purposes. The actuator moves at 20mm per second and stops automatically when fully retracted or fully driven out. This makes it easy to mount without having to use endstops or similar.

It is important to point out that there can be a margin of up to +/- 10% in regards to the movement of 20mm per second.

The linear actuator can be used for lifting, turning, pulling or pushing parts, such as doors, gates, windows, tools etc. You should always consider the safety before using it.

The actuator is connected directly to 12V DC or 24V DC depending on the chosen model. It will retract or drive out depending on connected polarity. Reversing the polarity will reverse the direction. This can be done with a two-pole switch, relay or other controls.

The actuator is made of anodized aluminum and should not be used outdoors, or in exposed places.

The holes in both ends for mounting are 6mm. You will typically bolt the actuator in both ends, so that it can move freely when moving in and out.

Force calculations

We always recommend that you calculate how much force is needed before mounting an actuator, alternatively test it out. An easy way to calculate this is [the Lever principle](#).

matronics

Buy online at www.matronics.eu/613050

Specifications

Current 12V	3A (5A peak)
Powersupply	Minimum 60W
Current 24V	1,5A (2,5A peak)
Lifetime	50000 times / ticks

Product overview

12V DC, 50mm



SKU 613049
Dimensions: 35 x 170 x 74mm

12V DC, 100mm



SKU 613050
Dimensions: 35 x 215 x 74mm

12V DC, 150mm



SKU 613051
Dimensions: 35 x 270 x 74mm

12V DC, 300mm



SKU 613052
Dimensions: 35 x 415 x 74mm

12V DC, 350mm



SKU 613053

12V DC, 500mm



SKU 613054
Dimensions: 35 x 665 x 74mm

12V DC, 1000mm



SKU 613059
Dimensions: 35 x 1170 x 74mm

24V DC, 50mm



SKU 613042-50

24V DC, 100mm



SKU 613042-100

24V DC, 150mm



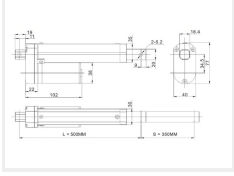
SKU 613042-150

24V DC, 300mm



SKU 613042-300

24V DC, 350mm



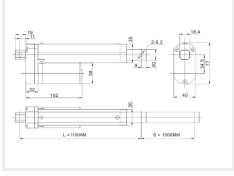
SKU 613042-350

24V DC, 500mm



SKU 613042-500
Dimensions: 35 x 665 x 74mm

24V DC, 1000mm



SKU 613042-1000
Dimensions: 35 x 1170 x 74mm

Product pictures

