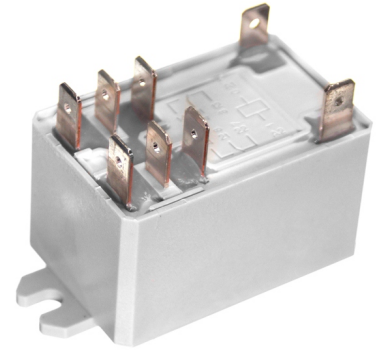


Switching relay, two-pole (DPDT)

Two-pole switching relay for 12V, 24V and 230V, that can turn on and off two signals simultaneous. Eg. for switching motor direction.



Two-pole switching relay for 12V, 24V and 230V, that can turn on and off two signals simultaneous. Eg. for switching motor direction.

This model with cable lugs (6,3 x 0,8mm) is very easy to connect, as it requires no soldering. There are two ends so it can be screwed on.

The relay can be used for changing the motor-direction, where the relay switches around the connection of plus and minus simultaneous. Notice that you cannot simply reverse all motors, especially not 230V.

matronics

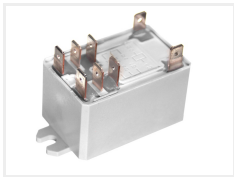
Buy online at www.matronics.eu/612201

Specifications

Max current	30A
Rated power	250W
Max voltage	440V
Temperature	-40 til 70 grader

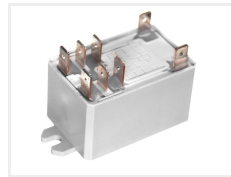
Product overview

12V DC



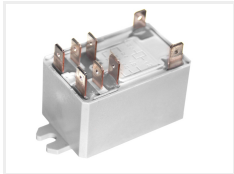
SKU 612201
Dimensions: 40 x 69 x 34mm

24V DC



SKU 612202
Dimensions: 40 x 69 x 34mm

230V



SKU 612203

Product pictures

