

SLIM LED Light Bar, Spot and Flood IO-30V

Slim LED light bar with a compact design and a single LED line. Available in Spot and Flood beam



Slim LED light bar with a compact design and a single LED line.
The spotlights provide a focused and long light beam.

The Floodlights provide a diffused and shorter light beam.

The LED lightbar is produced in aluminum with a glossy black finish. The result is a light and a slim design with optimal cooling for the LEDs. The front glass is polycarbonate, which has a very high tensile strength. The light bar comes with a cable mounted to a waterproof connector.

Assembly:

The light bar is very easy to install with the included pins, bolts and nuts. The legs are mounted at a suitable distance, after that the bolts are clamped into the side.

Accessories:

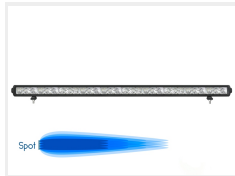
If you want more or extra mounting brackets, they can be found under the tab "Accessories"

matronics 

Buy online at www.matronics.eu/24606473

Product overview

Spot, 101cm - 8100lm



SKU 24606473
Lumen: 8100
Voltage: 10 - 30V dc
LEDs: 30 x 3W CREE
Consumption: 90W
Dimensions: 1004 x 69mm

Flood, 81,2cm - 6480lm



SKU 24606477
Consumption: 72W
Voltage: 10 - 30V dc
LEDs: 24 x 3W Cree
Lumen: 6480
Dimensions: 812 x 69mm

Flood, 101cm - 8100lm



SKU 24606478
Lumen: 8100
Voltage: 10 - 30V dc
LEDs: 30 x 3W CREE
Consumption: 90W
Dimensions: 1004 x 69mm

Accessories, Stainless mounting bracket



SKU 24606395

Accessories, mounting bracket



SKU 24606394

Product pictures



