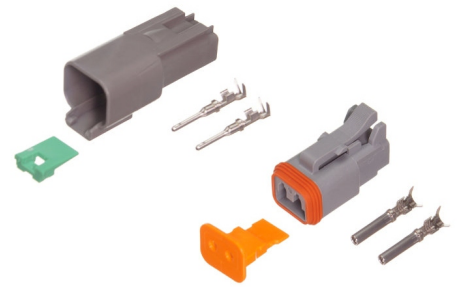


Complete Deutsch DT Connector

A loose male and a female Deutsch connector for mounting on a cable. All parts included, as well as two pins for 1.5mm² wires that are crimped.



A loose male and a female Deutsch connector for mounting on a cable. All parts included, as well as two pins for 1.5mm² wires that are crimped.

matronics 

Buy online at www.matronics.eu/509651

Notice that you need a fitting tool for crimping the pins.

Max current on each leg in the Deutsch DT connector is 13 ampere continuously.

Product overview

Male terminals, 2 poles

SKU 509651



Female terminals, 2 pins

SKU 509652



Male terminals - 3 poles

SKU 509655



Female terminals, 3 poles

SKU 509656



Spare terminal, male (I - 2mm²)

SKU P013-217



Spare terminal, female (I - 2mm²)

SKU P013-247



Rubberbase for 2-poles

SKU P013-032

