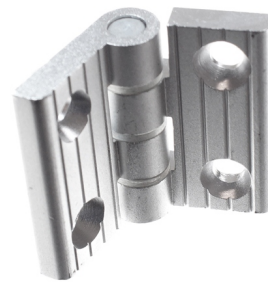


Series 40 - Hinge

Plastic and aluminum hinges, that can be used for doors and lids. The hinge is fastened with M6 bolts.



Plastic and aluminum hinges, that can be used for doors and lids. The hinge is fastened with M6 bolts.

For the plastic hinge, you need to use regular round bolts, while the aluminium hinge needs countersunk bolts.

matronics 

Buy online at www.matronics.eu/A400410

Product overview

Nylon



SKU A400410
Dimensions: mm

Aluminum



SKU A400411
Dimensions: mm

Product pictures

