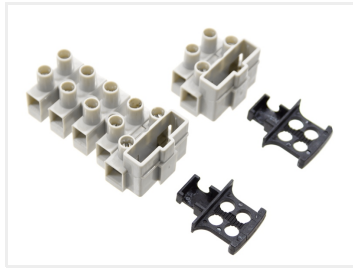
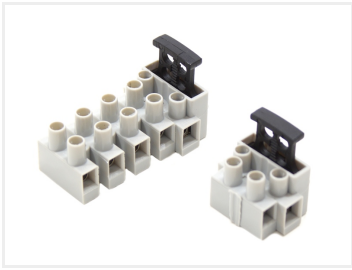


## Screw terminals with fuse-holder

Screw terminals with 2 or 5-ways, where one of them is secured by a 5x20mm fuse.



Screw terminals with 2 or 5-ways, where one of them is secured by a 5x20mm fuse.

Buy online at:

[www.matronics.eu/514059](http://www.matronics.eu/514059)

### Specifications

Max voltage 450V

Max current 6.3A 250V - 15A 450V

Wire 2.5-4.0mm<sup>2</sup>



**2-way**

SKU 514058



**5-way**

SKU 514059

Product pictures

