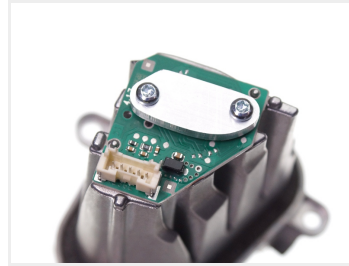
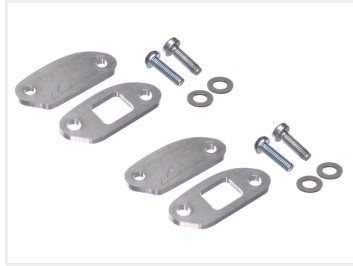


## Blanking-caps for Scania S + R LED DRL +2016

Caps that you can be "turn off" the LED emitter in the DRL on Scania +2016, can be used if you want to use other DRL lamps.



Caps in aluminium, that you can be "turn off" the LED emitter in the DRL on Scania +2016, can be used if you want to use other DRL lamps.

The emitter will still be on, but not light in to the fiber optic in the headlight. It is not possible to remove the emitter completely, as you will get error in the bulb check / canbus.

The covers fit in over the original print, with the included screws and washers.

### Mounting

The screws for the lamp are placed inside the doors. Unscrew them and you can tilt out the lamp from the body. After this you will have to remove the plastic frame around the lamp, it has been screwed into the lamp all around it.

The emitters for the DRL are placed on the bottom outer edge of the lamp. First, you will have to remove the lamp adjustment. Loosen the large heatsink and pull out the emitter.

Push the lock on the connector and disconnect it. The large black cap on the emitter is loosened. The two aluminium plates are then placed on top instead, remember to use the washers included. The plates are screwed on using the included 10mm M3 screws. It is, of course, important that the plate with holes are placed against the LEDs first.

Plug the connector again and assemble the lamp again.

Buy online at:

[www.matronics.eu/240839](http://www.matronics.eu/240839)



**Blanking-caps for Scania S + R LED DRL**

**+2016**

SKU 240839

Product pictures

