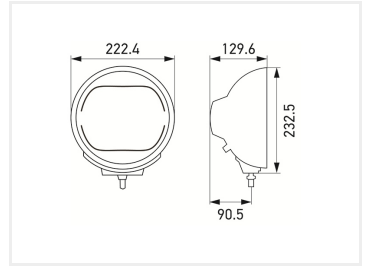
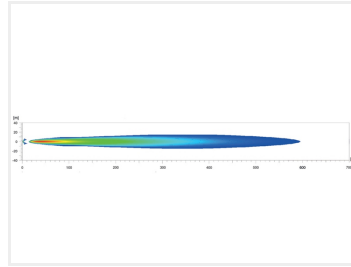
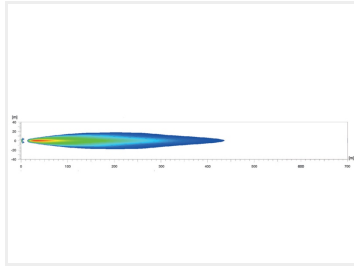


Hella Luminator LED Spotlight 12V / 24V

The new generation of Hella Luminator spotlight in a new modern design with built-in LED-technology in both spotlight and position light.



The new generation of Hella Luminator high beam in a new modern design with integrated LED technology in both high beam and position light. With this design, the headlight will still look modern for many years to come. The LED spotlight is available in 4 different versions - in black and chrome with reference number / reference value of 25 or 50.

The LED position light has a very characteristic hexagonal design that gives the lamp a special, distinctive design that you can have turned on all day and night. You will also get a very bright LED high beam that will light up very quickly and that will fit, color-wise, with many other xenon / cold-white LED products from us.

The LED spotlight has built-in heat sinks, which have a cooling surface of 230 cm², which ensures an efficient thermal control to achieve the longest possible lifespan. The LED spotlight is made of a high impact thermoplastic lamp housing. The supplied mounting brackets are made of zinc-coated steel with various adjustment options.

The LED headlight can be connected to both 12V and 24V

ECE type approved (ECE-R112 high beam, ECE-R7 position light, ECE-R10 EMC)

Ref.: 1F8 016 560-001, 1F8 016 560-011, 1F8 016 560-021, 1F8 016 560-031

Buy online at:

www.matronics.eu/24606555



Chrome, Ref. 50

SKU 24606555

Dimensions: 129,6 x 232,5 x 222,4mm

Product pictures

