

## Serie 20 - Solid angle bracket

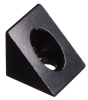
Angle bracket in solid aluminum, with black or silver surface. Typically used for V-slot profiles, but can also be used for standard series 20 profiles.

Angle bracket in solid aluminium, with black or silver surface. Typically used for V-slot profiles, but can also be used for standard series 20 profiles.

Buy online at:

[www.matronics.eu/A200214](http://www.matronics.eu/A200214)

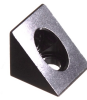
The bracket is 20x20x20 so it fits the profiles perfectly no matter how it is turned.



**Black**

SKU A200214

Dimensions: 20 x 20 x 20mm



**Silver**

SKU A200219