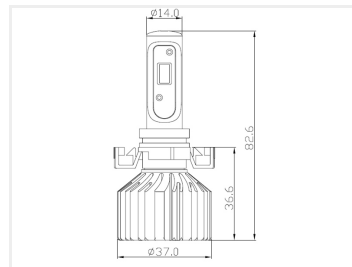
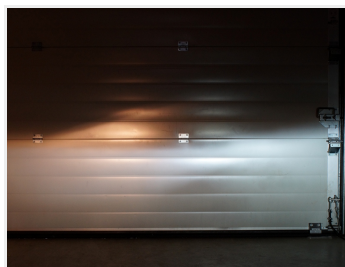
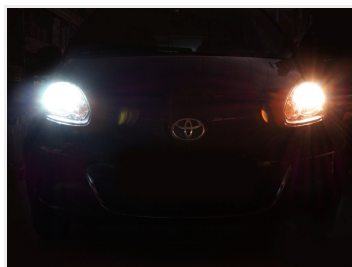


Matronics Performance LED Headlight Kit

Very powerful LED headlight kits, available for H1, H3, H4, H7, H8, H9, H11, H16, HB3, HB4 and PSX24 sockets.



Powerful LED headlight kits, available for H1, H3, H4, H7, H8, H9, H11, H16, H27, HB3, HB4 and PSX24 sockets. The kits are complete with two LED emitters, and connector/cable sets for replacing the original emitters with 5700K.

For cars with bulb-control, it is also possible to purchase Canbus kits for 12V and 24V.

Large light output

The light output is 1800 lumen pr. LED bulb - A standard halogen bulb is typically around 1000~1500 lumen.

Type 1

This type is characterized by having a narrow cooling unit, where the LED, that goes into the headlamp, is relatively bigger than a regular halogen-bulb

Type 2

This type is characterized by having a narrow LED device, where the cooling unit is bigger in compared to Type 1

OBS!

Both Type 1 and Type 2 in H1 fits the Hella 3003 lamps, that comes with 6 LEDs in the lower edge of the lamp - but NOT in the version with built-in position light bulb (Ba9s)

Mounting

The H7 bulb can be adjusted in the socket with the included allen key, this may be necessary for a better light cone. Some cars need an adapter for fitting the headlamp, please look on the Related products below

CANBUS / Pear Control

For some cars, it may be necessary to go with canbus kits to avoid error messages on the car lamp control.

Unfortunately we experience that on several VOLVO trucks the computer CANNOT be cheated and here these CAN-BUS modules will not have the correct function.

Buy online at:

www.matronics.eu/129050

**LED Kit, H1 - Type 1**

SKU 129160
 Colortemperature: 5700K
 Brightness: 3600 (nominal per set)
 Work temperature: -45 til 85 grader
 Voltage: 6V til 32V DC
 LED power: 32W (nominal per set)

**LED Kit, H4 - Type 1**

SKU 129162
 Colortemperature: 5700K
 Brightness: 3600 (nominal per set)
 Work temperature: -45 til 85 grader
 Voltage: 6V til 32V DC
 LED power: 32W (nominal per set)

**LED Kit, H7 - Type 3**

SKU 129193
 Color temperature: 6000K
 Brightness: 5000 (nominal per set)
 Work temperature: -45 til 85 grader
 LED temperature: -40 til 120 grader
 Voltage: 9V til 32V DC
 Current: 1.85A at 13.5V (per set)
 LED power: 25W (nominal per set)
 Estimated Lifetime: 30.000 Hours
 Cooling: Passive / Cooling elements

**LED Kit, H8 / H9 / H11 / H16 - Type 3**

SKU 129194
 Color temperature: 6000K
 Brightness: 5000 (nominal per set)
 Work temperature: -45 til 85 grader
 LED temperature: -40 til 120 grader
 Voltage: 9V til 32V DC
 Current: 1.85A at 13.5V (per set)
 LED power: 25W (nominal per set)
 Estimated Lifetime: 30.000 Hours
 Cooling: Passive / Cooling elements

**LED Kit, HB3 / 9005 Type 1**

SKU 129165
 Colortemperature: 5700K
 Brightness: 3600 (nominal per set)
 Work temperature: -45 til 85 grader
 Voltage: 6V til 32V DC
 LED power: 32W (nominal per set)

**LED Kit, PSX24W - Type 2**

SKU 129099
 Color temperature: 6000K
 Brightness: 3600 (nominal per set)
 Work temperature: -45 til 85 grader
 LED temperature: -40 til 120 grader
 Voltage: 9V til 32V DC
 Current: 1.8A at 13.5V (per set)
 LED power: 25W (nominal per set)
 Estimated Lifetime: 30.000 Hours
 Cooling: Passive / Cooling elements

**LED Kit, H3 - Type 1**

SKU 129161
 Colortemperature: 5700K
 Brightness: 3600 (nominal per set)
 Work temperature: -45 til 85 grader
 Voltage: 6V til 32V DC
 LED power: 32W (nominal per set)

**LED Kit, H7 - Type 1**

SKU 129163
 Colortemperature: 5700K
 Brightness: 3600 (nominal per set)
 Work temperature: -45 til 85 grader
 Voltage: 6V til 32V DC
 LED power: 32W (nominal per set)

**LED Kit, H8 / H9 / H11 / H16 - Type 1**

SKU 129164
 Colortemperature: 5700K
 Brightness: 3600 (nominal per set)
 Work temperature: -45 til 85 grader
 Voltage: 6V til 32V DC
 LED power: 32W (nominal per set)

**LED Kit, H27/880/881/888/894 - Type 1**

SKU 129168

**LED Kit, HB4 / 9006 - Type 1**

SKU 129166
 Colortemperature: 5700K
 Brightness: 3600 (nominal per set)
 Work temperature: -45 til 85 grader
 Voltage: 6V til 32V DC
 LED power: 32W (nominal per set)

**12V Canbus Kit, H1**

SKU 129050



12V Canbus Kit, H3
SKU 129051



12V Canbus Kit, H7
SKU 129053



12V Canbus Kit, HB3
SKU 129057



12V Canbus Kit, 9004
SKU 129061



24V Canbus Kit, H3
SKU 128901



24V Canbus Kit, H7
SKU 128903



24V Canbus Kit, HB3
SKU 129057



12V Canbus Kit, HB5
SKU 129061



12V Canbus Kit, H4
SKU 129052



12V Canbus Kit, H8 / H11
SKU 129056



12V Canbus Kit, HB4
SKU 129058



24V Canbus Kit, H1
SKU 128900



24V Canbus Kit, H4
SKU 128902



24V Canbus Kit, H8/H11
SKU 128905



24V Canbus Kit, HB4
SKU 128904

Product pictures

