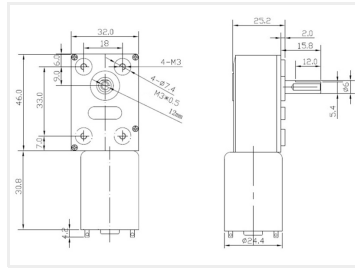


## DC gear motor, 12V

Small but powerful geared DC motor for 12V. Available with different speeds (RPM) and torque.



Small but powerful geared DC motor for 12V. Available with different speeds / RPM and momentum. A lower geared motor has higher torque.

The motor is very compact and silent. It can be used for many different purposes, from automatics to small robots and cars.

The gear is a worm-gear, which has that advantage that it will not run by itself when the motor is turned off. The gear-house is very sturdy, and has 4 holes for mounting. The axle on the motor is 6mm.

### Adapter / coupling 6mm

This is used for connecting the motor axle to another 6mm axle. The 4 pinol screws are tightened around the axles.

### Motor coupling

The 4 mounting holes makes it easy to fasten anything to the motor.

### Bracket

The solid bracket makes it easy yo mount the motor. The motor can sit both inside and outside the bracket.

## Buy online at:

[www.matronics.eu/613010](http://www.matronics.eu/613010)

## Specifications

Voltage	6V - 15V
Max consumption	1,3A
Normal consumption	<0,5A
Weight	150g



**10 RPM**  
SKU 613009  
Torque: 25kg.cm



**50 RPM**  
SKU 613010  
Torque: 7kg.cm



**200 RPM**  
SKU 613011  
Torque: 2kg.cm



**Bracket**  
SKU 613019



**Adapter / coupling (6mm)**  
SKU 613090



**Motor coupling Ø22, 6mm**  
SKU 613091

## A photograph of a small, cylindrical, metallic motor or actuator, likely a solenoid, mounted on a rectangular base. The device has several ports and a central shaft. The base is a dark, rectangular block with a central cylindrical protrusion. The motor is a smaller, cylindrical component attached to the side of the base. It has a central shaft and several ports or connections on its side. The overall appearance is industrial and mechanical.

