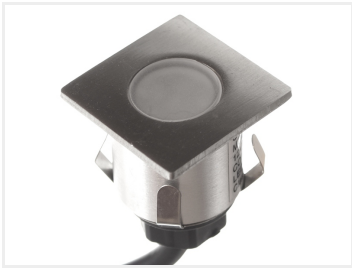


## HORTUS 12V instalation spot 0.6W, square

A square LED spot, 35x35mm in stainless steel. Can be used outdoors on balconies and on ceilings. It gives a warm white light.



A square LED spot, 35x35mm in stainless steel. Can be used outdoors on balconies and on ceilings. It gives a warm white light. The spot has a hole-diameter of 32mm.

The spot has a light output of 35 lumen and only uses 0.6W.

The matte front gives you a great wide and soft beam.

Buy online at:

[www.matronics.eu/608231](http://www.matronics.eu/608231)

### Specifications

Voltage	12V AC/DC
Consumption	0,6W
Lifetime	8000
Colortemperature	3000K
LEDs	6
Cable	0,3 meter with plug



### **HORTUS 12V instalation spot 0.6W, square**

SKU 608231

Dimensions: 39 x 35 x 35mm

## Product pictures

