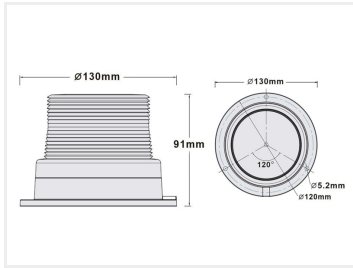


Prostroke - LED Beacon, surface-mounting IO-IIOV

Simple and compact LED beacon with multiple funktions. Available in multiple colors.



Simple and compact LED strobe light in our Prostroke series for flat mounting. Available with yellow, red, blue, and green light and lens.

The housing is robustly designed, with electronics embedded in plastic to protect against vibrations. The lens is made of polycarbonate, which is extra impact-resistant.

The lamp can be connected from 12V to 110V, making it suitable for various applications.

Flashes with 4 quick blinks followed by a short pause.

Bolts and nuts for tightening are included, as well as wire connectors for installation. The foam base can be used to protect the mounting surface from scratches.

Buy online at:

www.matronics.eu/731410A

Specifications

Voltage	12V-110V
Approval	ECE R10
Mounting	3 bolts (included) / 3 screws
Consumption	6 Watt
Operating temperature	- 30°C to +60°C



Yellow

SKU 731410A

Dimensions: 91 x 130mm



Red

SKU 731410R

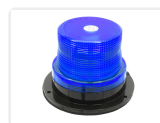
Dimensions: 91 x 130mm



Green

SKU 731410G

Dimensions: 91 x 130mm



Blue

SKU 731410B

Dimensions: 91 x 130mm

Product pictures

