

## Gylle marker light parts

Gylle's marker lights parts - LED units, rubber bases, and glasses in different designs.



### Eksempel / example



Choose between various rubber bases and glasses as spare parts for your existing Gylle marker lights or DIY project in conjunction with our LED emitters or the original.

We have 3 different rubber bases to choose between: Long, short and straight. Furthermore, you can choose between 4 different glasses: Orange, red, white, and clear.

It is therefore you that sets the standard for, how you would like your marker light to look. If you do not want to use our LED emitters, the rubber bases can also easily be used for Gylle's own emitters.

## Loose LED unit

Loose LED units for your Gylle markers if they break or if you want to make special lamps. They fit in all Gylle marker outline lamps. The 6 bright LEDs give you great visible light. They can be connected to 10-30V. Available with smoked glass or whatever the color of the LED is.

- 10-30V
- 5-meter cable
- 6 LEDs

## Rubber base - Long model

The base has an overall length of 195mm and the light sources have a diameter of 61mm when they are inserted. The head of the base has a diameter of 80mm.

The mounting surface is 100 x 50mm and it has a 6 pre-drilled holes in the metal plate at the bottom.

## Rubber base - Short model

The base has a length of 110mm and the light sources have a diameter of 61mm when mounted. The head is the same size, as that on the long model with 80mm diameter.

The mounting surface has the same holes and hole spacings as on the long model, however the base is a little smaller with 95 x 48mm.

## Rubber base - Straight model

The base has an overall length of 165mm and the light sources have a diameter of 61mm when they are inserted. The head of the base has a diameter of 80mm.

The mounting surface is 100 x 50mm and it has a 6 pre-drilled holes in the metal plate at the bottom.

## Cover

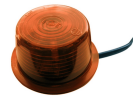
Coverup one of the lamps with this cover. Perfect if you want to have front-mounted lamps at the bottom of the front bumper.

Buy online at:

[www.matronics.eu/24605154](http://www.matronics.eu/24605154)



**LED unit, Red**  
SKU 24605140



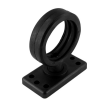
**LED unit, Orange**  
SKU 24605142



**LED unit, Cold White**  
SKU 24605146



**LED unit, Warm White**  
SKU 24605148



**Rubber base, Short**  
SKU 24605154



**Rubber base, Straight**  
SKU 24605156



**Glass, Orange**  
SKU 24605150



**Glas, Red**  
SKU 24605151



**Glass, White**  
SKU 24605152



**Glass, Clear**  
SKU 24605153



**Cover, Cover**  
SKU 24605158



**LED unit, Smoked red**  
SKU 24605141



**LED unit, Smoked orange**  
SKU 24605143



**LED unit, Smoked cold White**  
SKU 24605147



**LED unit, Smoked warm white**  
SKU 24605149



**Rubber base, Long**  
SKU 24605155



**Rubber base, Y-model**  
SKU 24605157



**Glass, Smoked range**  
SKU 24605160



**Glass, Smoked red**  
SKU 24605161



**Glass, Smoked**  
SKU 24605162



**Glass, Smoked yellow**  
SKU 24605163

## Product pictures



## Eksempel / example

