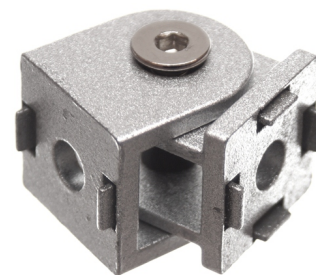


Serie 2O - Arm

Tilttable arm that can be mounted in the end or the side of a series 20 profile.



Tilttable arm that can be mounted in the end or the side of a series 20 profile.

The arm can be used for making joints in various angles, where you use eg. 2-3 armes, or it can be used for making movable profile-segments.

The arm consists of two seperate alu-parts, a bolt for screwing these together, and a spacer.

matronics

Buy online at www.matronics.eu/A200409

Product overview

Serie 2O - Arm



SKU A200409

Product pictures

