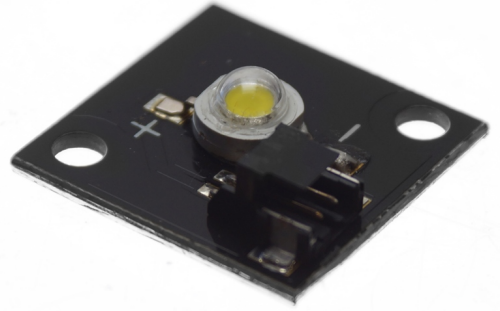


## LED Light Source for Hella LED Celisrings

LED emitter for Hella Celisringe, which can be used to replace a broken original or to change the color in the ring.



Note that the yellow and white have been updated to a much newer, better and smaller CREE XQE LED, that gives you much more and better light, especially the yellow/amber. The newer Hella Celis also uses the same size LED.

LED emitter / light source for Hella Celisringe, which can be used to replace the destroyed original or to change the color in the ring.

The conversion is quite simple, since the existing diodes are mounted with screws and a power connector, then redevelopment requires no more than a small Torx screwdriver.

Since the original is not produced anymore, we have chosen to produce them ourselves, in the colours yellow, warm white and xenon-white with a newer and more powerful diode. Notice that some models has the connector on a wire, while others have the connector on the board as the original.

Hella lamps normally uses 2 pcs. per lamp, while the smaller versions use only 1. They can be used for both 12 V and 24 V, as there is a built in power supply.

Manufacturer's item numbers:

White: LXHL-MWEA

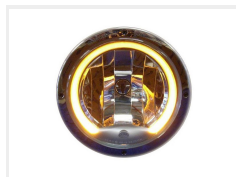
Yellow: LXHL-ML1A

matronics

Buy online at [www.matronics.eu/240750](http://www.matronics.eu/240750)

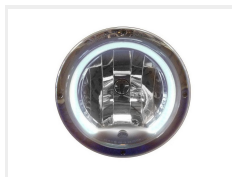
## Product overview

Yellow - CREE XQE



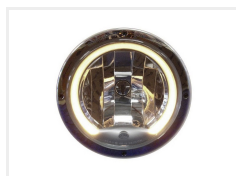
SKU 240756-AM

Xenon white - CREE XQE



SKU 240756-CW

Warm white - CREE XQE



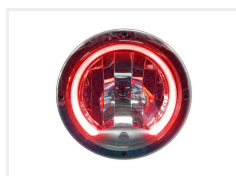
SKU 240756-WW

Blue - Edison



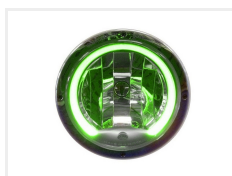
SKU 240750

Red - Edison



SKU 240751

Green - Edison



SKU 240752

Product pictures

