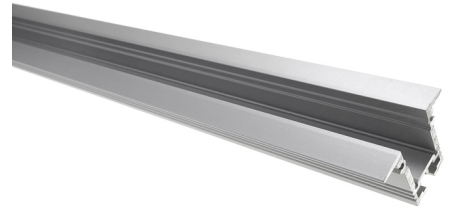


Alu-profile, Bardolino, T-Profile, 35, 2x25mm

An anodized T alu-profile for embedding SMD LED stripss on walls, ceilings or floors. A nice profile for do-it-yourself light.



An anodized T alu-profile for embedding SMD LED stripes on walls, ceilings or floors. A nice profile for do-it-yourself light.

Our sturdy plastic-front can be used to protect the LED stripe from dirt, but is not necessary if it is mounted on the ceiling or on the wall. The matte plastic front will be able to distribute the light more softly.

Mounting:

- SMD tape mounted on the bottom
- A plastic-front glass shot into the side of the profile
- The profile is mounted in a 22 mm-23 mm groove

Mounting spring

It can be used to make screw-free mounting of the T-profiles. The easiest way to attach them on the wall and on the floor. It also serves as an assembling frame between two rails.

At the same time, it makes it possible to easily disassemble the rails again, if there is a need for cleaning of the profile and possibly a replacement of SMD tape or glass.

It mounts easily, kicks it in at the back of the brace and then screw the screws back down. The legs is tilted backwards, and the rail is pushed into the Groove it should sit in. Spring-legs will then make sure shine will be kept inside.

Dimensions:

- Totally spring-bone length; 45 mm
- Spring-leg length and immaculate rail 35 mm.
- Maximum total width 105 mm
- Shoots-length 40 mm.

matronics 

Buy online at www.matronics.eu/131101

Product overview

Profile, 100cm



SKU 131101

Profile, 201cm



SKU 131102

Profile, 302cm



SKU 131103

Profile, 503cm



SKU 131105

Accessories, 1 end cap



SKU 131245

Accessories, 1 mounting-spring



SKU 131246

Product pictures

